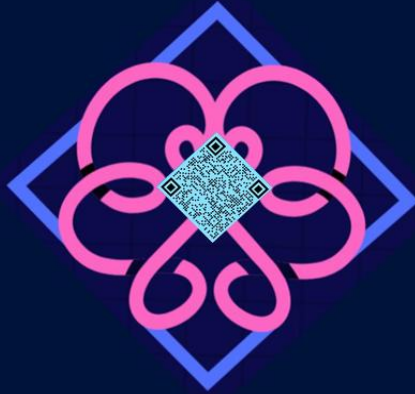


**We are excited to present to you
Starting 21st April 2026**

Bury Neuro Hub



**Tailored support for families of
children / young people with Neurodiverse needs
(with or without a diagnosis)**

This service is for parent/carers who would like support and advice around their neurodiverse needs. Your young person does not have to have a diagnosis to access this service.

Drop-in sessions are every

Tuesday & Thursday

9.30am – 3pm

You can drop in or bookable appointments are available on request if you prefer.

Tel :0161 762 1440

Email: jburns@buryneurohub.co.uk

Address: Phoenix House, 100 Brierley Street, Bury BL9 9HN

The Bury Neuro Hub Offer



Parent/Carers attend a Hub Drop In or Contact the Hub

Invitation to Neuro Hub Appointment offered.

- ✚ In person at the Hub
- ✚ Online
- ✚ Phone calls
- ✚ At school or college

Timely appointment given to discuss and to assess need and match with the correct support at the right time

Needs are Triaged -Signposted to support immediately.

- ★ Triaged as **Green = Getting Advice**
- ★ Triaged as **Amber = Getting Help**
- ★ Triaged as **Red = Getting More Help or Risk Support**

Families will all have access to the Getting advice stage whilst waiting for interventions. Families may also move through the quadrants where required.

Getting Advice

Signpost to relevant seminars held monthly (examples) Autism and Anxiety –CAMHS * Sensory Processing – Rehabilitation for Independence * Emotional Dysregulation and Building Resilience – CAMHS * The Proud Trust * SENDIASS

Coffee Meetings- Offering a safe environment for families to meet and have a chat with others in the same situation. (Examples)

- Thinking Families
- Post Diagnostic
- Financial support

Information and Resources

- First Point Website / Social Media / Burys Local Offer
- Advice on SEND and reasonable adjustments
- Social opportunities - local groups/ sessions for all members of the family.
- Local and National support groups for parents accessing universal services.
- Padlet's on various topics

Thriving in Bury for Children and Young People, Parents and Carers, Education, Professionals, Sensory Padlet, Neurodiversity Padlet Autism and ADHD

- “Can Do Approach” Speech and Language WhatsApp group
- Signpost parents / carers and professionals to the Bury Multi-agency Sensory Processing Needs Toolkit on the local offer

Peer to Peer Support

- Parent/carers and young people accessing support from peers when needed.

Getting Help

- **Navigator 1-1 support** for 4-6 weeks support
- **Access to IBASIS and SACS-r age 12 to 24 months**
- **Access to PACT age 2–10-year-old**
- Paediatric Autism Communication Therapy an evidence-based intervention that works through video feedback techniques
- Access to **Post Diagnostic Courses ADHD and Autism**
- **Financial Support with DLA, PIP and Charity Forms**
- **Onward referral** Where needed referrals into services will be actioned to gain the correct support for the family's level of need

Getting More Help

Thinking Families - This is a 6-week course –

The group intervention aims to support carers to understand their child's relational and attachment needs, in order to develop different strategies and ideas for supporting their children in a way that increases their sense of security and well-being and improve their behaviour. delivered by Bury CAMHS, in partnership with First Point

Riding the Rapids 10 weeks training course

Courses will be running in separate age groups

- ✓ Early Years
- ✓ Primary age children
- ✓ Secondary age children

Available to parent/carers of children/young people with a diagnosis of Autism, are on the waiting list for a diagnosis. It is also for parent/ carers of children/ young people with significant learning/ intellectual disabilities.

Getting Risk Support

This person will be there for emotional support for the families in line with Care Plan approach, attending and supporting at meetings where necessary.

As required collaborative support (systemic practice)